

# LATCH LOCK COMPONENT

SERIES 8000

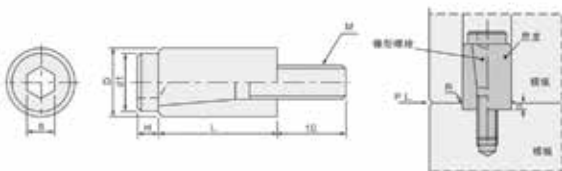
锁模组件系列



# 尼龙扣

## PARTING LOCK

### PO 尼龙扣



通过对锥形螺栓的锁紧，调整调整模板与尼龙套之间的摩擦力。产品使用了特殊的尼龙材料，因此具有良好的耐磨性和耐热性。高温模具请选择POH。

It can adjust friction between template and nylon sleeve through locking taper bolt. Special nylon material is used for the product. Thus, the product has good abrasion resistance and heat resistance. Select poh for high temperature mould.

Type	材料	温度
PO	Nylon&S45C	120℃
POH	Nylon Resin &S45C	250℃

Type	尺寸 Size						Colour
	D	d1	M	B	L	H	
PO	10	8.5	M5	4	18	3	
	12	11.5	M6	5	20	3.2	
	13						
	16	14	M8	6	25	4	
	20	16	M10	8	30	5	
POH	10	8.5	M5	4	18	3	
	12	11.5	M6	5	20	3.2	
	13						
	16	14	M8	6	25	4	
	20	16	M10	8	30	5	

#### ■ 安装方法 Installation diagram

将尼龙套埋入到动模板中3mm左右。将定模板孔的内表面进行粗磨精加工对模板插入口进行倒圆角R，如果进行C倒角，其耐用性会降低。

Installation method: Embed nylon sleeve in template of moving die about 3mm. Implement rough finishing on inner surface of template hole of fixed die and implement filleting R of insertion mouth of template surface. If chamfer C is implemented, its durability will reduce.

### PLBS 尼龙扣专用衬套



M	材料	S	表面处理
S45C		发蓝(Fe <sub>3</sub> O <sub>4</sub> )	

Type	D	D1	BL	t	R	d	C	M
PLBS	10	16	26	6	2	2.3	0.8	6
	13	20	30	8	2.5	2.8	1.0	8
	16	25	37	10	3	3	1.0	10
	20	30	42	10	3	3	1.0	10

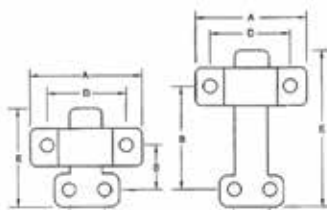
# 锁模扣

## LATCH LOCK

## SE



M 材质	H 硬度
SK-2	HRC 58-60



ES型 ES type

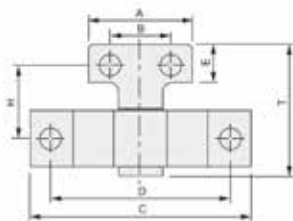
EL型 EL type

Type	A	B	C	D	E	拉力 Clamping force	螺丝 Screw
SES	62	28	20	45	54	400kg	M8
SEL	62	62	20	45	88	400kg	M8

## SL



M 材质	H 硬度
SCM21	HRC 58-60



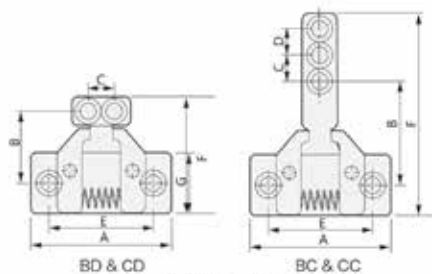
Type	A	B	C	D	E	F	H	T	螺丝 Screw	拉力 Clamping force
SL2	40	26	72	60	20	20	23	48	M8	150
SL2T		22					66	96		
SL3	50	30	113	90	22	30	38	72	M10	250
SL3T							79	114		
SL4	50	30	113	90	22	30	38	75	M12	350
SL4T					25		103	139		

### 产品特点 Precautions

- 利用简单之构造，可使模具完全打开与闭合，且装置简单互换性高。
- 本装置适合三板板之针点射出，有拉斯科头与脱模一次完全之功能。
- 本装置有四种型：SL—2型适合小型之模具，SL—3型适合中型模具，SL—4型适合大型模具。
- 本装置采用高合金钢热处理后研磨而成，采用进口弹簧，品质可靠。
- Based on its simple and easy design, the slide lock makes molds open and close complete, and it also makes installation and interchanging seem effortless.
- Excellent for 3-plates mold plates for its precision injection (for example needle-point injection). It will cut off the excessive materials and leave the mold at the time of finishing.
- 4 different styles to choose from: SL-2: good for molds less than 5 oz. SL-3: good for medium-size molds. SL-4: good for large size molds.
- It is well-known for its exceptional quality. It was made by imported springs, heat-treated and grinded alloy steels.

# 锁模扣 LATCH LOCK

## BC

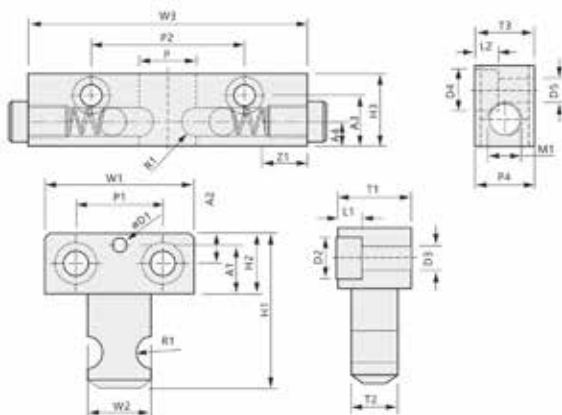


超荷重黄色扁弹簧  
Over-load heavy yellow flat spring

<b>M</b> 材质	<b>H</b> 硬度
SK-2	HRC 58-60

Type	A	B	C	D	E	F	G	拉力 Clamping force	螺丝 Screw
BD	78	40	15	-	60	68	38	500kg	M8
BC	78	58	15	15	60	116			
CD	93	58	17	-	72	102	51	900kg	M10
CC	93	73	17	17	72	142			

## SLPL



<b>M</b> 材质	<b>S</b> 表面处理
SS0C	黄色烤漆

Type	尺寸 Size													
	A1	A2	A3	A4	D1	D2	D3	D4	D5	H1	H2	H3	L1	L2
SLPLA	20	12.5	23	11	5	17	10	17	10	62.5	25	33	10	10
SLPLB	6	12	21	10	5	10.5	6.5	11	6.5	48	20	28	6.5	6.5

Type	尺寸 Size													
	P1	P2	P3	P4	R1	T1	T2	T3	W1	W2	W3	Z1	M1	
SLPLA	35	70	26	20	R6.5	30	19.5	30	60	25.5	127.5	21	M14x2.0	
SLPLB	25	60	18	12.5	R4.25	20.5	12	20.5	40	17.5	86	20	M12x1.75	

# 锁模扣

## LATCH LOCK

### SMPLK 卡轮式



碟形弹簧、内部滚轮以及卡轮的组合，能使模具的开合具有良好的平衡性，滚轮的旋转能较好的防止偏心磨损的发生。锁紧套为上下对称式，所以若有磨损也可倒置安装以再次使用。因为锁紧座的背面有避让位，所以模板上有台阶时也可以使用。

Disc spring, and a combination of internal roller card wheel, can make the opening and closing of the mold has good balance. Wheel rotator can better prevent eccentric wear occurs. The locking sleeve is symmetric, so if the wear can also be installed to use again. Because the back of the locking seat is avoiding vacancy, can also use to the template has the steps.

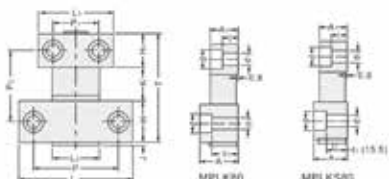
材料

SK3(前) + S50C(后)

### SMPLK (标准型锁紧套)



### SMPLKS (紧贴型锁紧套)



#### 标准型:

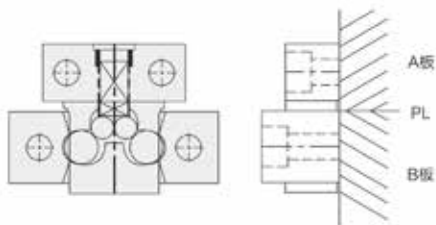
Type	尺寸 Size																拉力(kgf)		
	L	L1	L2	T	H	H1	J	K	P	P1	P2	A	A1	t	t1	d	d1	1套(常温状态)	
SMPLK 标准型 锁紧套	10	48	36	25	42	22	18	2	2	36	24	22	24	16	9.5	18	11	6.5	50
	20	54	42							40	28			9	16				100
	30	65	46							50	31								150
	60	73	50	35	48.5	25	20	3.5	3.5	52	33	26	27	19	9.5	17	14	9	300
	80S				56.5				11.5	52	33	34							
SMPLKS 紧贴型 锁紧套	100	103	65	48	58	30	24	4	4	76	42	31	34	25	13	19	17	11	500
	30	65	46							50	31								150
	60	73	50	35	48.5	25	20	3.5	3.5	52	33	26	24	19	9.5	15.5	14	9	300
	80S				56.5				11.5	52	33	34							400

#### 加长型:

Type	尺寸 Size																拉力(kgf)		
	L	L1	L2	T	H	H1	J	K	P	P1	P2	A	A1	t	t1	d	d1	1套(常温状态)	
SMPLK 标准型 锁紧套	60				79.5					34.5		57							600
	80	73	50	35	87.5	25	20	3.5	42.5	52	33	65	27	19	3.5	17	14	9	800
SMPLKS 紧贴型 锁紧套	100	103	65	48	89	30	24	4	35	76	42	65	34	25	13	19	17	11	1000
	80	73	50	35	87.5	25	20	3.5	42.5	52	33	65	24	19	9.5	15.5	14	9	800

① 高温模具可选择耐热锁紧套SMPLKH。 High temperature mold can choose heat resistant SMPLKH.

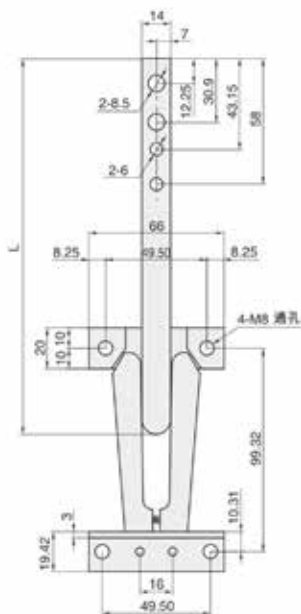
#### ■ 安装方法 Installation diagram



# 强制回位装置

## FORCED RETURN SET

### FRET



#### 特性 Characteristic

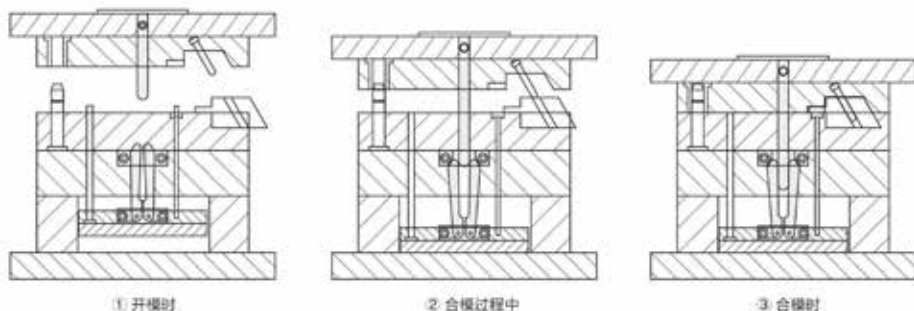
固定侧与可动侧在开、合模动作中同步进行压回顶出机构。确保顶出机构强制回位，有效防止斜顶块与斜导柱在回位过程中因不平衡而卡死，导致撞伤模穴表面。

The fixed side and the movable side are open, and the pressure returning and ejector mechanism is synchronously performed during the clamping operation to ensure the forced returning of the ejector mechanism, thereby effectively preventing the oblique top block and the oblique guide column from being stuck due to unbalance during the returning process. Causes damage to the surface of the cavity.

Type		材料	硬度	表面处理
固定型	预定型	SCM21	50-52HRC	发蓝(Fe <sub>3</sub> O <sub>4</sub> )
FRET	FRETL			

Type	L
FRET	220
FRETL	200-400

#### 功能示意图 Functional chart



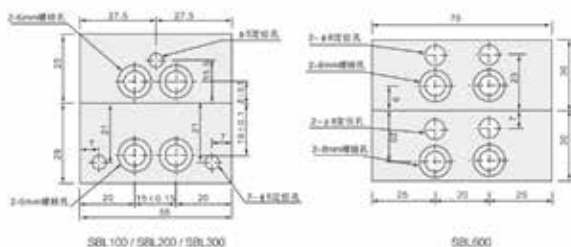
① 开模时

② 合模过程中

③ 合模时

## 锁模扣 LATCH LOCK

### SBL

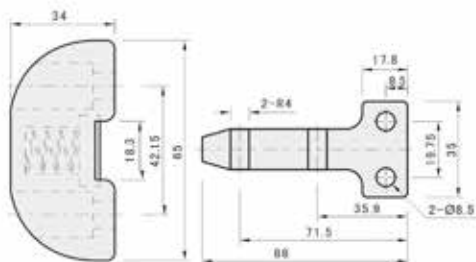


适用于三板板之针点射成型，有拉高料头与脱模一次完成之功能。精密铸造而成，精度高，拉勾采用高级合金钢经热处理研磨而成，冲击力特强，两侧采用耐热弹簧片，弹性佳，耐热力强，有数十万次之开模能力。本锁模装置作用力向外侧，故不伤模具，装置时两边对称，固定销孔用5mm之板刀攻过后再以固定销固定之，以增加稳定性。

Applicable to the three template needle injection mold, has the function of breaking the head and release is completed. Precision casting, precision hook adopts advanced alloy steel by heat treatment and grinding, ditch is particularly strong, on both sides of the use of heat-resistant spring sheet, good elasticity, heat tolerance, several die one hundred thousand times capacity. The locking device to the outside force, not to hurt the mold, after the device has symmetrical sides, fixed pin hole of 5mm outer knife, and fixed by the fixing pin, to increase the fixed.

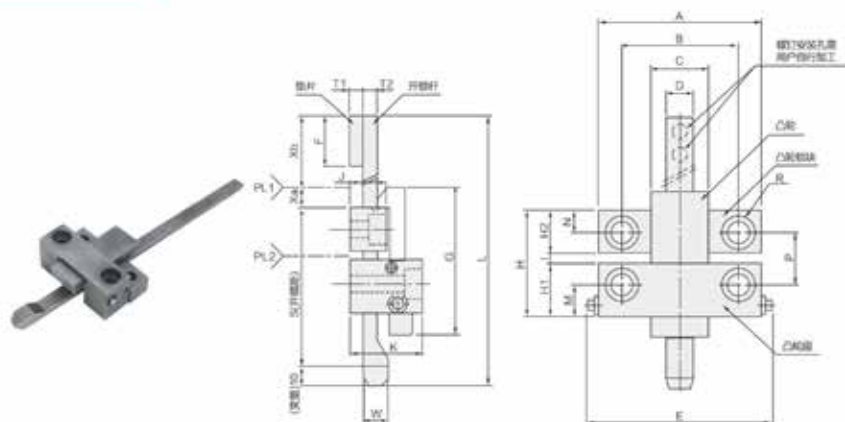
Type	拉力(Kgf)
SBL100	100
SBL200	200
SBL300	300
SBL600	600

### SLD



M 材料	H 硬度
SCM21	HRC 55-60

### TYPE



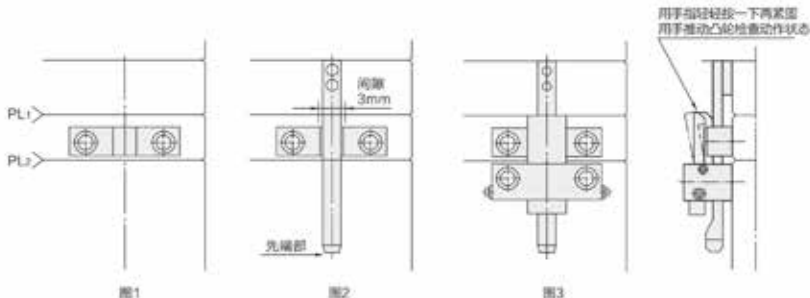
Type	断裂载荷N	A	B	C	D	E	F	G	H	H1	H2	I
TYPE-S	44129	73	52	26	12	78	40	69	49	25	20	4
TYPE-L	107872	103	76	45	18	108	50	80	58.5	30	24	4.5

Type	J	K	L	M	N	P	T1	T2	R	W	附件(螺钉CC8)
TYPE-S	16	32	250	14	10	25	5.5	6	M8	11.2	8x30、8x45 各2件
TYPE-L	18	38	300	16.5	12	30	5.5	8	M10	13.2	10x30、10x50 各2件

### 产品特点 Precautions

- 闭模阻力小，最适合于低压闭模成型。
- 结构简单，安装简单，锁模力大。
- 动作状态可见，开锁点易于调整。
- 不受模具温度影响，运行可靠。
- Closed mould resistance is small, and it is most suitable for low-pressure closed mould forming.
- Simple structure, simple installation and large clamping force.
- The action state is visible and the unlocking point is easy to adjust.
- Not affected by mould temperature, reliable operation.

### 功能示意图 Functional chart





# 锁模扣

## LATCH LOCK

## SMLK

## 磁力锁模扣

① 耐热温度在200℃以下 ② 如需耐高温（200℃以下），需另行订购

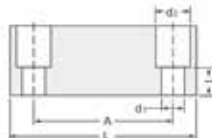
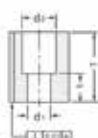
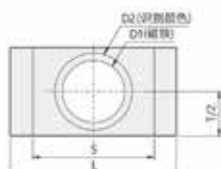
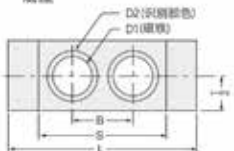


材料

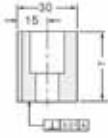
SS400+强力磁铁



底座



方铁

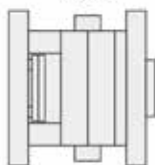


Type	拉力(kgf) 20℃	A	B	S	L	T	t	D1	D2	d1	d2
SMLK-40	40kgf	63	25	60	80	25	12	18	22	9	14
SMLK-80	80kgf										
SMLK-100	100kgf	100	39	79	126	40	15	30	34	11	18
SMLK-200	200kgf										
SMLK-400	400kgf										
SMLK-600	600kgf	100	39	79	126	60	30	20	35	13	20
SMLK-800	800kgf										
SMLKC-20	20kgf	36	-	36	50	25	-	17.5	22	6.6	11
SMLKC-40	40kgf	36	-	36	50	25	-	17.5	22	6.6	11
SMLKC-50	50kgf	52	-	52	70	40	-	29.5	34	9	14
SMLKC-100	100kgf	52	-	52	70	40	-	29.5	34	9	14

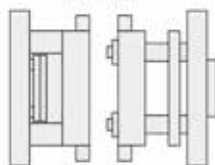
### 产品特点 Precautions

- 与其他锁模扣相比，更易于安装。
- 基本不需要在合模时减速。
- 从而缩短了成形周期。
- SMLKC与SMLK型号相比，外形缩小了约50%~60%。
- Comparing with other MOLD locking buckle, it is much easier to install.
- Deceleration is basically not needed
- During die assembly so that it shortens shaping cycle.
- Compared with SMLK,SMLKC overall dimensions is reduced 50%-60%.

合模状态



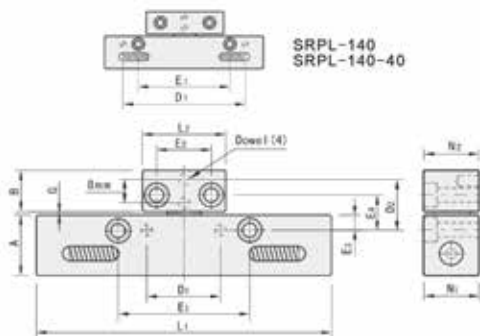
开模状态



# 锁模扣 LATCH LOCK

SRPL-P

锁模扣


 SRPL-140  
SRPL-140-40

材质

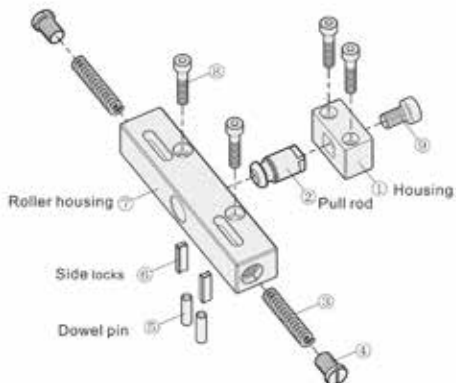
P20 &amp; SKD61

Type	L1	L2	N1	N2	A	B	G	定位销 Dowel pin
SRPL-P	135	38	25	25	28	19	1 40	φ5
	140	64	32		32	22	2 38	φ6

Type	E1	E2	E3	E4	D1	D2	安装螺丝 Mounting screws	拉力(kgf)
SRPL-P	60	25	7	15.6	30	22.1	M6 × 25	10
				54.6		61.1		
	70	35	10	23.1 59.3	100	28.1 64.3	M10 × 35	150

## 产品特点 Precautions

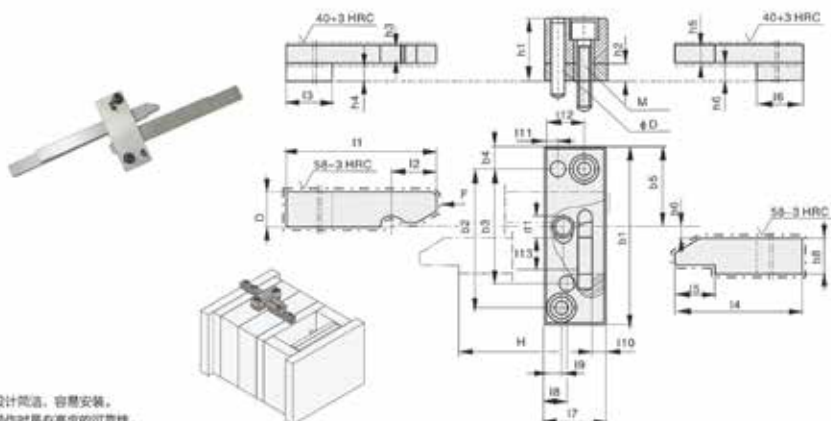
- 锁模扣为精密装置，须对称安装，否则将可能导致单套锁模扣受力不平衡而导致锁模扣断裂。
- 锁模扣组件间精密配合，请勿与其他自行加工的零件配合使用。
- 如模具需要维修改动，请先拆除锁模装置后再进行后续操作。
- The clamping buckle is a precision device and must be installed symmetrically, otherwise it may cause the unbalanced force of the single set of clamping buckle and cause the clamping buckle to break;
- Precise coordination between the clamping components, please do not use it with other self-processed parts;
- If the mold needs to be repaired and changed, please remove the clamping device before proceeding with subsequent operations.



# 锁模扣

## LATCH LOCK

### SZ170

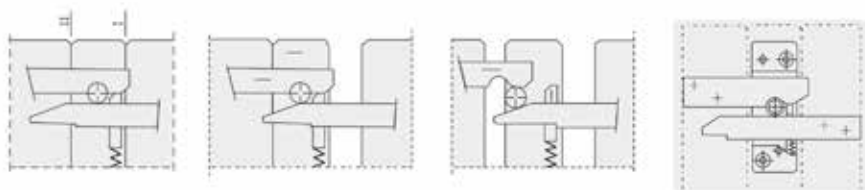


设计简洁，容易安装。  
操作时具有高度的可靠性。  
经试验和测试与Z171可以两选一使用。  
Designed simple, easy to install.  
the height is adjustable when operating.  
test proved that you can choose one from Z170 and Z171.

Type	b1	l7	b4	l11	l9	l8	l12	b5	l13	h2	l1	b7	h3	l4	b8	h5	d1	l6
SZ170/1	63	22	8	5	6	8	14	28.5	7	6	100	12.5	6	125	12.5	6	8	80
SZ170/2	90	34	13	8	8	18	24	45	16	7.5	140	20	12.5	160	16	12.5	12	117
SZ170/3	110	42	15	9	9	22	31	55	20	12	200	25	16	250	20	16	14	125

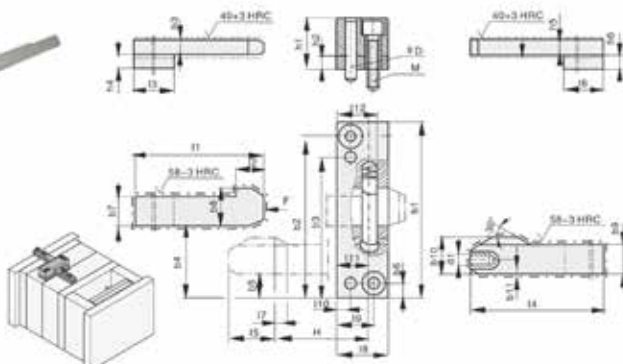
Type	h6	l3	h4	l5	l2	l10	F [N]	H min	H max	h1	h6	b2	b3	φD	M
SZ170/1	6.5	63	6.5	14.1	16	5	8000	5.5	80	22	4	49	40.5	φ5x30	M5x25
SZ170/2	8	98	8	17.86	22.5	5	14000	9.5	110	32.5	6	69	62	φ6x50	M6x40
SZ170/3	12.5	100	12.5	18	25	7	24000	10.5	190	44	7	80	80	φ8x60	M8x45

#### ■ 功能示意图 Functional chart



# 锁模扣 LATCH LOCK

## SZ171



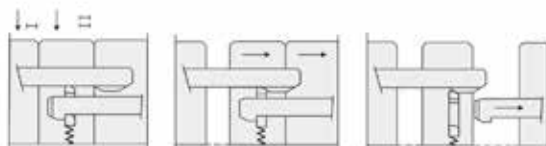
设计简洁，容易安装。  
操作时具有高度的可靠性。  
经试验和测试与SZ170可以两选一使用。

Designed simple, easy to install.  
The height is adjustable when operating.  
test proved that you can choose one from SZ171 and SZ170.

Type	b1	l8	l9	l10	b6	b3	b2	h2	l1	b7	b8	h3	l4	b9	b10	l5	l2	l3	h4
SZ171/1	75	22	16	6	6	60	69	6	140	12.5	16	6	140	12.5	15.5	20	12	63	6.5
SZ171/2	90	31.5	24	8	7	73	83	7.5	180	16	20.5	12.5	180	16	20	27	16	100	8
SZ171/3	112	40	30	10	9	88	103	12	250	20	25.5	16	250	20	25	36	20	125	12.5

Type	h5	b11	d1	F [N]	H min	H max.	h1	h6	l6	l7	l11	l12	b4l	l12	φD	M
SZ171/1	6	6	4	6500	5.5	80	22	6.5	63	5.2	13.5	17.5	30.5	10	φ5x30	M5x25
SZ171/2	12.5	7.5	8	15500	7	110	32.5	8	100	9.65	19	25	38	12	φ6x50	M6x40
SZ171/3	16	9.5	10	22000	9	160	43.5	12.5	125	8.7	25	32	48	16	φ8x60	M8x45

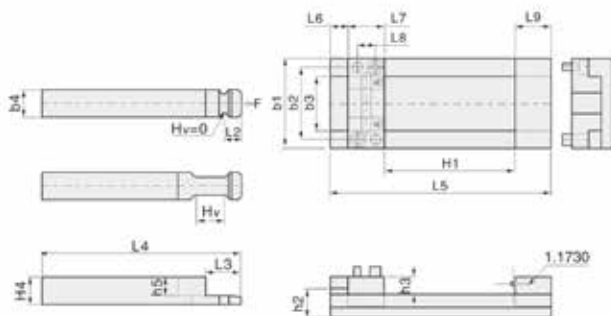
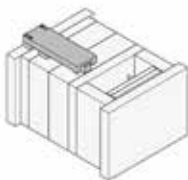
### ■ 功能示意图 Functional chart



# 锁模扣

## LATCH LOCK

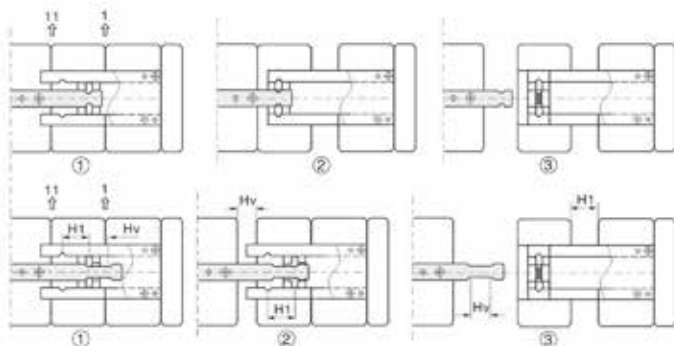
### SZ174



特点：安装加工简单，机械互锁设计，安全可靠。连接方式为定位，使产品更精准。可根据模具需求选择对应产品。在模板上至少装2套并对称使用。使用温度范围120℃。  
 Characteristics: Installation and processing are simple. Design of mechanical interlock is safe and reliable. Connecting body and square positioning make product more accurate. People can select corresponding product according to die load. There shall be at least 2 sets on template for symmetrical use. Operating temperature range is 120℃.

Type	b1	H1	Hv	L5	L4	L3	L2	h5	h4	h3	h2	h6	b4	b3	b2	L9	L8	L7	L6	安装螺丝	定位销	F(N)
SZ174/50	50	90	0	140	140	20	9.75	10	16	9.3	16	22.3	15	30.05	40	20	10	20	10	M4×12	6×20	16000
		20	40																			
SZ174/80	80	130	0	180	180	20	16.75	13	21	12.3	22	30.3	20	45.05	60	34	16	34	15	M6×16	6×20	27000
		50	70																			
SZ174/100	100	117	0	200	200	34	22.25	16	27	15.5	27	37.5	25	60.05	80	45	22	45	15	M8×18	8×24	48000
		32	66																			
		167	0	250	250	34																

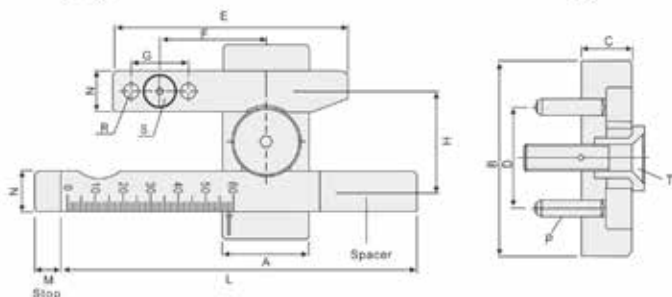
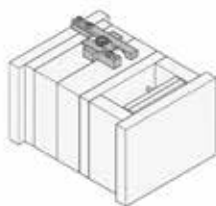
### 功能示意图 Functional chart



# 锁模扣

## LATCH LOCK

SGS



独特的设计与精确的刻度尺保证了在第一次开模具有很高的精度。比传统模式更节约成本，优化模具结构。

More accurate first plate opening compared to other conventional systems. Scale lever indicates opening of the first plate. Reduces costs compared to conventional mechanisms.

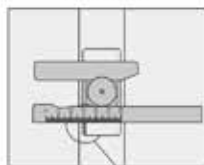
M 材质	N 硬度
1.0503	HRC 55 $\pm$ 3°

Type	尺寸 Size															sca
	A	B	C	D	E	F	G	H	L	M	N	P(x2)	R(x4)	S(x2)	T	
SGS.226616	22	66	16	38	75	30	25	32	105	10	15	$\phi$ 6x20	$\phi$ 6x30	M6x30	M6x35	40
SGS.368619	36	86	19	46	102	43	32	42.7	153	12	20	$\phi$ 8x24	$\phi$ 8x36	M8x36	M8x40	60
SGS.421024	42	106	24	56	124	51	40	50.2	190	15	24.5	$\phi$ 10x30	$\phi$ 10x40	M10x40	M10x45	80

- 注意：选择所需的行程后，再固定垫板上的刻度杆。  
 Note: Fixup the scale bar in cushion plate before choose the length.

### 功能示意图 Functional chart

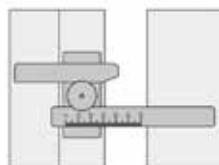
合模状态  
Closed state



如刻度选取31时  
Choose 31 inscalebar

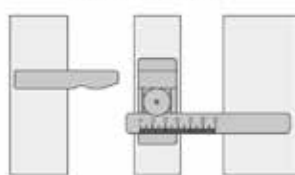


第一次开模  
The first time open mold



开模行程为31  
Openmold length is 31.

第二次开模  
The second time open mold



完全分离  
Separate completely

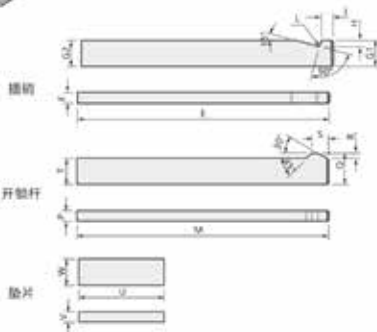
# 锁模扣

## LATCH LOCK

**LLL**


消除了打碎模具的可能性，因为不需要任何可以改变的调整或调整可能意外碰掉的连接。适用于一般的或重型的模具，每副模具最少需要四个锁模扣。

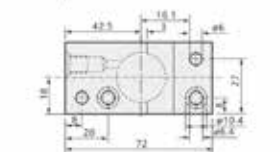
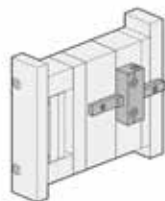
Eliminate the possibility of breaking the mold, as there is no need for any adjustments that can be changed or connections that may be accidentally knocked out. Suitable for general or heavy duty molds, requiring a minimum of four clamping clasps per pair of molds.



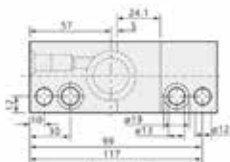
锁扣

开轴杆

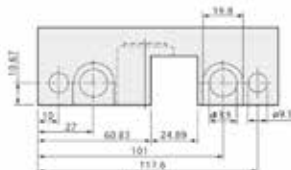
垫片



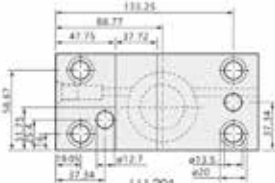
LLL051E



LLL101E



LLL151



LLL201

锁模机架



Type	R 寸 Size										
	A	B	C	D NOM.	E	F	G1 NOM.	G2 NOM.	H	I NOM.	L RAD.
LLL 051E	80	35	25	16.2	180	7.9	16	16	3.4	6	1
LLL 101E	127	47	37				24	24			
LLL 151		49.2	36.5	12.07	24.56	24.81	2.92	12.7	0.75		
LLL 201	152.5	74.6	61.9							38.1	

Type	R 寸 Size									
	M	P	Q	R NOM	S	T	U	V	W	
LLL 051E	180	7.9	16	3	3.5	12.5	55	8	12	
LLL 101E										9.9
LLL 151	406	12.07	37.46	6.98	22.22	31.87	114.3	25.27	38.1	
LLL 201										9

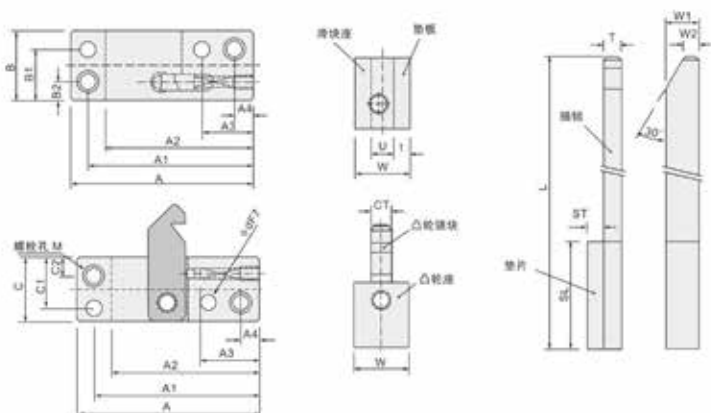
# 锁模扣 LATCH LOCK

## SPL



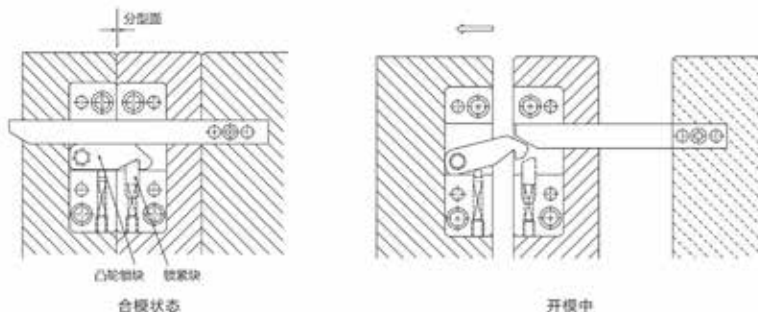
此款产品结构小，正确开模，无反作用力，完全没有锁模负载，可用于低压锁模成形。其动作与合模顺序无关。流道板先于分型面闭合时，锁紧块起到后道功能。

It with small frame, but open mold exactly and no counteractive, no lock load, apply to low pressure lock molding. Its action irrespective of compound molding sequence, locking blocks have back function when hot runner plate close before device face.



Type	滑块座·凸轮座											垫板		插销		垫片						
	A	A1	A2	A3	A4	B	B1	B2	C	C1	C2	W	U	螺栓孔M	d	t	w1	w2	T	L	ST	SL
SPLS (综合应用)	68	61.5	55	19	7	26	19	7	24	17	7	20	8	M6	φ6	6	13	5.9	7	250	6.5	40
SPLM (综合应用)	88	79	70	24	9	38	29	9	30	21	9	30	12	M8	φ8	7	16	8	10	300	8	50
SPLL (综合应用)	104	93	82	27	11	48	37	11	38	27	11	45	20	M10	φ10	8	20	9.5	15.5	350	10.2	55

### 功能示意图 Functional chart



凸轮锁块 锁紧块

合模状态

开模中



# 锁模扣

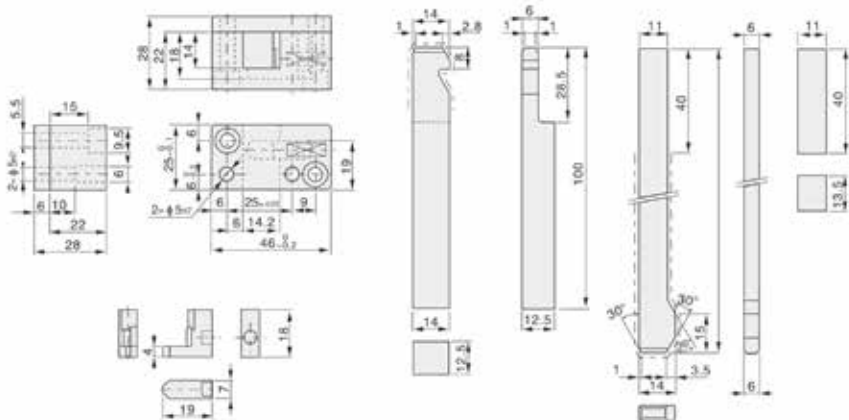
## LATCH LOCK

### PLSW

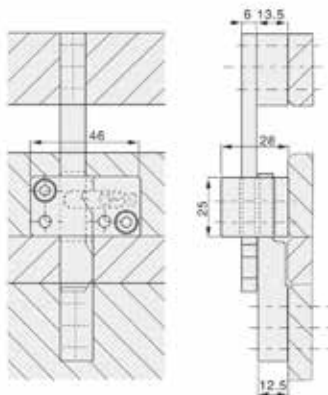


通过钩形锁销，捕锁重复动作的结构，使产品小型化节省安装空间，也可用于退料板顶出。

The structure of hooked locking pin and repeated actions of plug pin makes the product miniaturization so that it saves installation space. It can also be used for ejection of stripper plate.

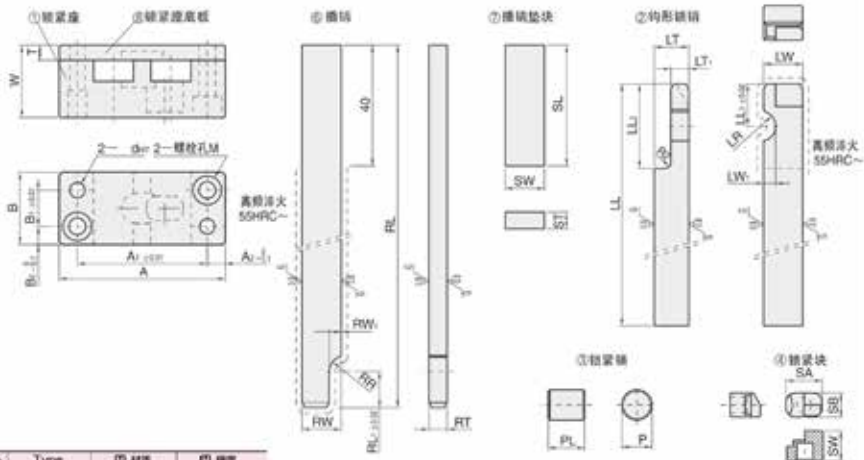
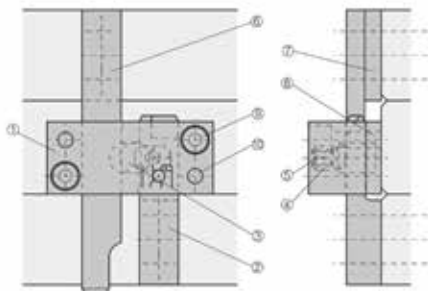


### 功能示意图 Functional chart



# 锁模扣 LATCH LOCK

## PLSZ / PLMZ



No.	Type	材料	硬度
①	锁紧座	HRC 50-55	
②	钩形锁销	合金工具钢	HRC 58-
③	锁紧座	HRC 58-60	
④	锁紧垫块	HRC 58-60	
⑤	弹簧	SUS631	
⑥	垫块	合金工具钢	HRC 55-
⑦	垫块	S45C	
⑧	锁紧座底板	合金工具钢	HRC 50-
⑨	内六角螺栓	SCM435	HRC 43
⑩	定位销	SUJ2	HRC 50

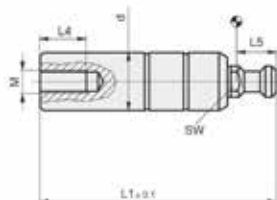
- 由于钩形锁销较长，也可适用于流道推板的顶出。
- 有效控制开、合模顺序，无反作用力。
- Because the hook lock pin is longer, it can also be applied to the ejection of the runner push plate.
- Effectively control the order of opening and closing MOLD without reaction force.

Type	① 锁紧座 ② 锁紧座底板											⑤ 钩形锁销							
	A	A1	A2	B	B1	B2	d	M	W	T	LW	LW1	LR	LL	LL1	LL2	LT	LT1	
PLSZ	55	43	6	24	12	6	5	5	24	5	13	4	5	100	14	28	11.5	6	
PLMZ	67	53	7	32	16	8	6	6	32.5	6	18	5	6	150	18	36	16.5	10	

③ 锁紧垫块		④ 钩形锁销		⑥ 弹簧		⑦ 垫块				⑧ 垫块			⑨ 附件					
P	PL	SA	SB	SW	5	RW	RW1	RR	RL	RL1	RT	SW	SL	ST	⑩ 螺栓	⑪ 定位销		
10	12	12	8	10	WLH5-15	13	4	5	150	12	6	13	40	5.5	CB5	25	MSTM5	30
12	17	16	10	13	WLH6-20	16	5	6	200	16	10	16	50	6.6	CB6	35	MSTM6	35

# 内锁模扣

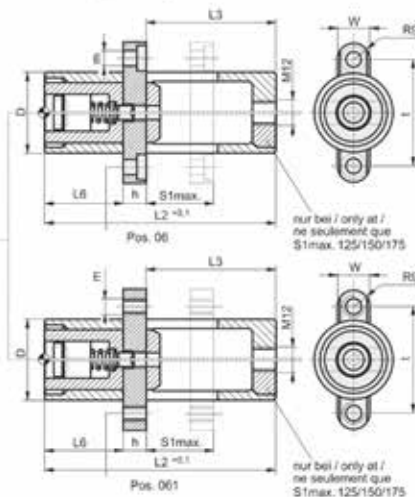
## INTERNAL LATCH LOCK

**SZ3**


注意事项：在模具加工中请精确加工对称安装，至少使用2套模具以上，请根据不同模具的负荷决定数量及规格。

特点：具有复位机构，二次顶出装置的功能，使用时需良好的润滑，才能使产品寿命更长、更耐磨。

Characteristics: it has reset mechanism and double ejection device function. Good lubrication is needed in usage so that product life can be much longer and the product can become more abrasion resistant.

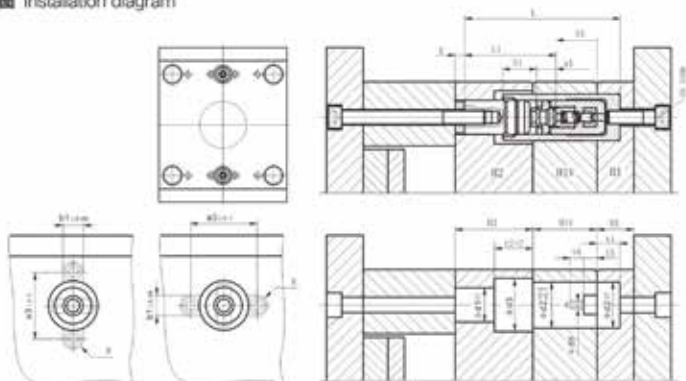


Type	S1	d	D	L1	L2	L3	L4	L5	L6	h	t	w	M	m
SZ3-11	16	17	25	45	66	33	20			8	35	10	M8	M5
				70										
	100			90	57									
	125			110	77									
SZ3-21	25	25	34	70	86	42	40			10	46	14	M10	M8
				120										
	170			111	67									
	170			136	92									
	220			161	117									
	270			186	142									
	270			211	167									
	220													
270														
SZ3-31	50	30	42	125	130	76	50			12	57	18	M12	M8
				175										
	225			155	101									
	175			180	126									
	225			205	151									
	275			230	176									
	325			255	201									
	275													
325														

# 内锁模扣

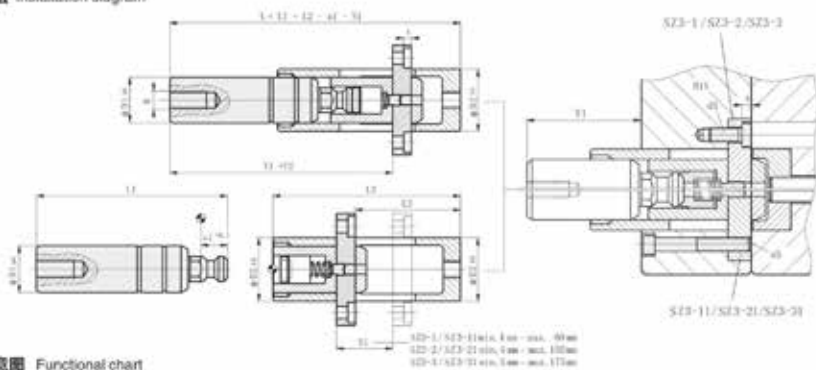
## INTERNAL LATCH LOCK

### 加工示意图 Installation diagram

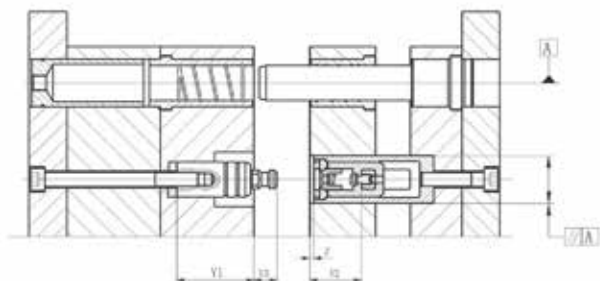


Type	a1	a2	a3	b1	d1	d2	d3	d4	d5	t	t5	t6	M	R
SZ3-1/SZ3-11	10,8	-	35	10,1	17	25	27	-	M4	4,5	8	8	8	5
SZ3-2/SZ3-21	14,25	18	46	14,1	25	34	36	39	M6	4,5	10	10	10	7
SZ3-3/SZ3-31	18,4	27	57	18,1	30	42	44	47	M8	6	12	12	12	9

### 安装方法 Installation diagram



### 功能示意图 Functional chart



# 锁模扣

## LATCH LOCK

**SZ5-0**

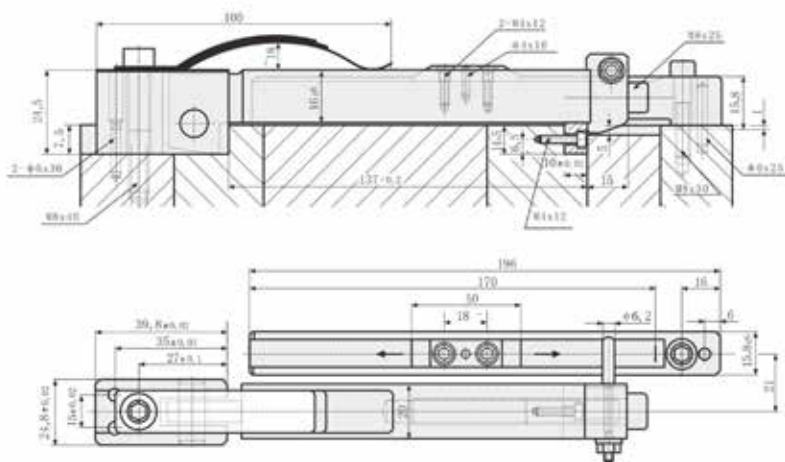

SZ5-0



SZ5-1



SZ5-2

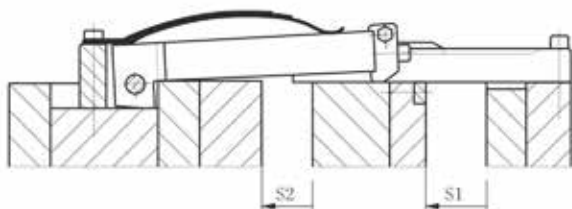


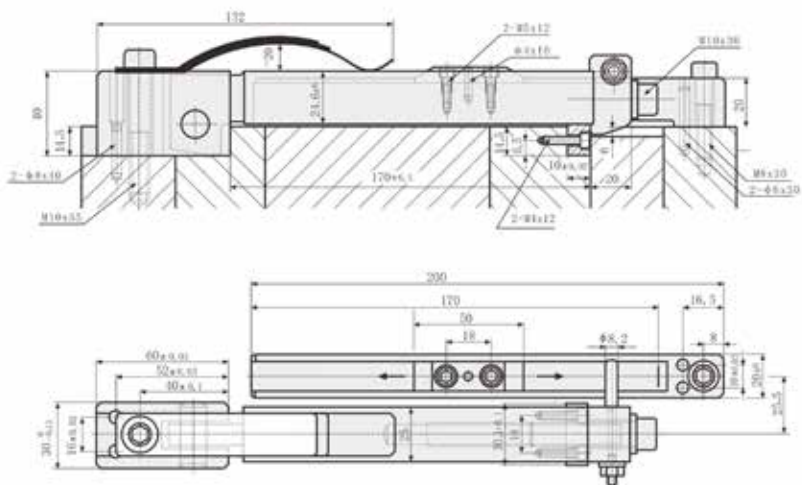
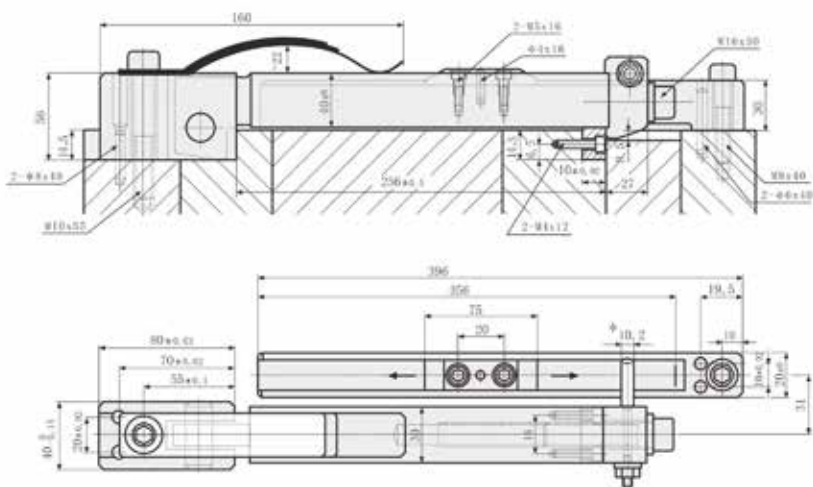
### 产品特点 Precautions

安装方便，弹簧设计安全可靠，行程需要计算准确，使模具在平衡状态开模，否则产品会损坏，在模板上至少要2套并对称安装。

Characteristics: Installation is convenient. Spring design is safe and reliable. The stroke needs to be calculated accurately. Implement die opening in equilibrium state. Otherwise, the product will be damaged. There shall be at least 2 sets on template for symmetrical installation.

### 功能示意图 Functional chart

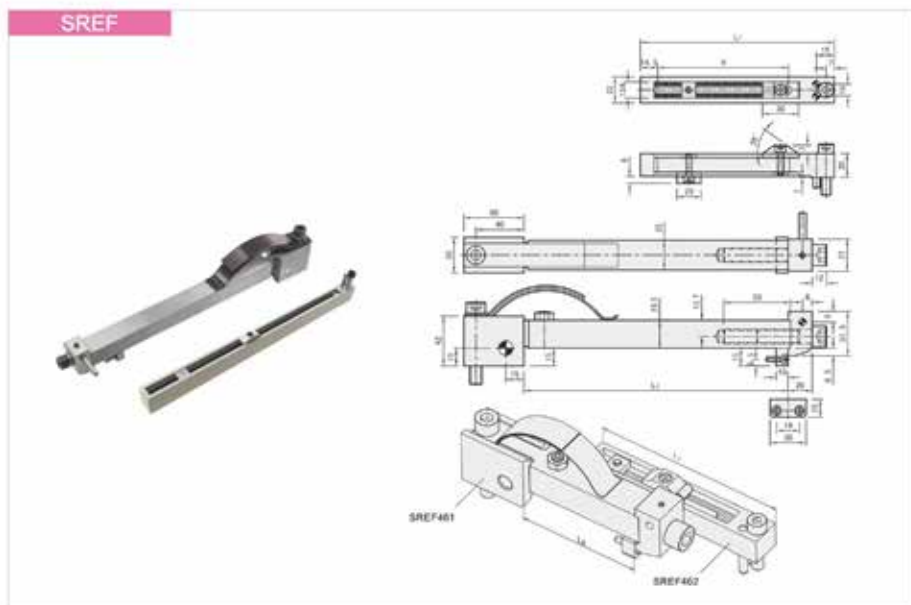


**SZ5-1**

**SZ5-2**


# 锁模扣

## LATCH LOCK

### SREF



#### 产品特点 Precautions

- 行程调节部份做齿形设计，省去销子L的加工繁琐，同时，简化了行程调整；
- 独特弹片设计，安全可靠，安装方便；
- 建议将锁模扣安装在模具的左右两个侧面，由于产品自身重量问题，安装在模具上下两个侧面可能会影响产品锁模力度；
- 多套锁模扣开模行程必须完全相同，否则会因受力不平衡而损坏，安装方向应垂直于分型面；
- 使用时，时常检查各安装螺丝是否紧固，如模具需维修时，请先拆除机构后再进行后续加工。
- The part of stroke adjustable adopt dental saw design, save dowel pin holes process, at the same simplify stroke adjustable.
- Unque shrapnel design, safety and reliable, and easy to install.
- Suggest install latch lock on left and right two sides of mould. Due to weight problem of products, if install on top and low two sides will impact locking force.
- More sets latch lock mechanism install must be sure same stroke, otherwise will cause latch lock break due to imbalance force.
- When use it, frequently to check up various installed screw whether fastening or not, if need maintenance and change. Please first remove latch lock device to follow-up operation.

Type	L1	L2	H
SREF460	140	90	83.5
	204	170	152
	254	220	254

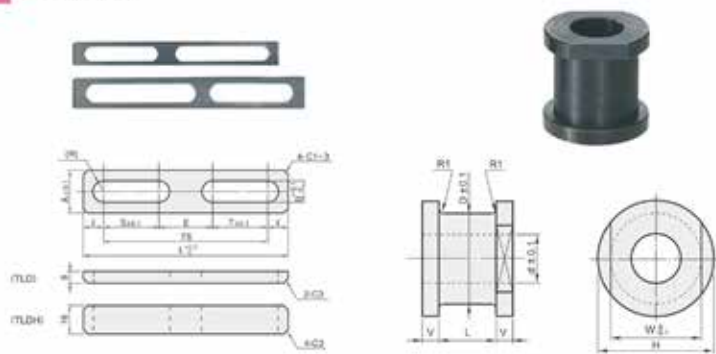
Type	L1	H
SREF462	140	83.5
	204	152
	254	194.5

Type	L1
SREF461	90
	170
	220

Pos	1	2	4	10	13	14
品牌	拉杆固定座	拉杆	垫块	衝钩	钢件	主体
材质	Cr12MoV	P20	Cr12MoV	SKD61	SKD11	P20
硬度	58-62HRC	26-33HRC	55-58HRC	52±2HRC	55-58HRC	26-33HRC

# 定距拉板 TENSION LINKS

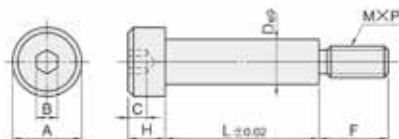
## TLD / LKT 定距拉板 / 挡圈



Type	A	D	l	L	指定单位 5mm			
					S	E	T	TS
TLD	19	11	15	TS+30	15~130	25~235	40~140	70~290
	25	14	17.5	TS+35	15~135	25~245	40~140	80~300
	32	17	17.5	TS+35	25~140	25~275	50~180	105~350
	38	21	20	TS+45	25~150	30~295	50~185	115~375

Type	No.	拉板 (A尺寸)	d	D-W	H	L	V
LKT	10	19	6.5	10	13	11	3
	10-18					18	4
	13					11	3
	13-18	25	9	13	19	18	4
	16					11	3
	16-18					18	4
	20	32	11	16	22	11	3
	20-18					18	4
20-18	11					3	
		38	13	20	26	18	4

## Z38 公制塞打螺丝



材料	硬度	表面处理
SCM435	HRC 30~35	Fe <sub>2</sub> O <sub>3</sub>

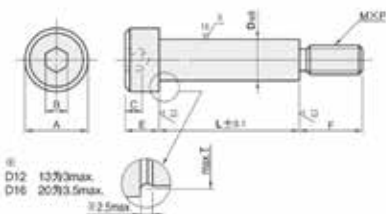
Type	D		A		H		MxP	F		C		B
	Max	Min	Max	Min	Max	Min		Max	Min			
Z38-6	5.987	5.951	10	9.78	4.5	4.32	M5X0.8	9.75	2.4	3		
Z38-6.5	6.487	6.451	10.22	9.78	4.5	4.32	M5X0.8	9.75	2.4	4		
Z38-8	7.987	7.951	13.27	12.73	5.5	5.32	M6X1	11.25	3.3	4		
Z38-10	9.987	9.951	16.27	15.73	7	6.78	M8X1.25	13.25	4.2	5		
Z38-12	11.984	11.941	18	17.73	9	8.78	M10X1.5	16.4	4.9	6		
Z38-13	12.984	12.941	18.27	17.73	9	8.78	M10X1.5	16.4	4.9	6		
Z38-16	15.984	15.941	24.83	23.67	11	10.73	M12X1.75	18.4	6.6	8		
Z38-20	19.980	19.928	30.33	29.67	14	1.73	M16X2	22.4	8.8	10		
Z38-24	23.98	23.928	36	35.61	16	15.73	M20X2.5	27.4	10	12		
Z38-25	24.98	24.928	36.39	35.61	16	15.73	M20X2.5	27.4	10	12		



# 止动螺栓

## STOP BOLTS

### MSB



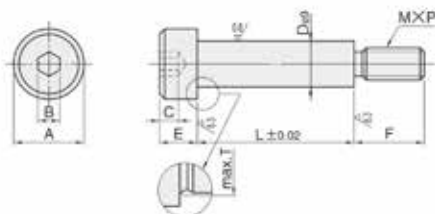
材料	硬度	表面处理
SCM435	HRC 30~35	Fe <sub>2</sub> O <sub>3</sub>

D12 13.9<sup>±0.03</sup>max.  
 D16 20.9<sup>±0.03</sup>max.  
 ±0.25max.

Type	D	A	B	C	E	F	MXP	T	L		
MSB	4	-0.02 -0.05	6.5	2.5	1.6	3	5	2.5X0.45	4.5	10-45 (+5mm)	
	4.5		7							6	5
	5		8	3	3.5	6	3x0.5	5.5	10-50 (+5mm)		
	5.5		9							3	2.2
	6		-0.025 -0.061	10	4	2.5	5	9	5X0.8	7	10-80 (+5mm)
	6.5	13									
	8	16		6	4	8	12	8X1.25	10.8	10-120 (+5mm) (+10mm)>100mm	
	10										17
	12	-0.032 -0.075		18	8	5	10	16	10X1.5	14	10-130 (+5mm) (+10mm)>100mm
	13										
	16			-0.04 -0.092	27	14	9	18	24	16X2.0	21
	20										

### MSBL

长度精密型

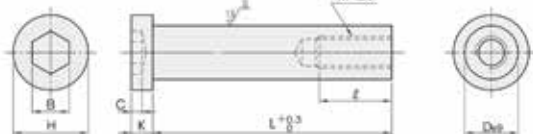


材料	硬度	表面处理
SCM435	HRC 30~35	Fe <sub>2</sub> O <sub>3</sub>

Type	D	A	B	C	E	F	MXP	T	L		
MSBL	6.5	-0.025 -0.061	10	4	2.5	5	9	5X0.8	7	10 15 20 25 30 40	
	8		13	5	3	6				6X1.0	8.7
	10	-0.032 -0.075	16	6	4	8	12	8X1.25	10.8	10 15 20 25 30 35 40 45 50	
	13									18	8
	16		-0.04 -0.092	24	10	7	14	18	12X1.75	17	20 25 30
	20										27

# 螺栓拉杆 PULLER BOLTS

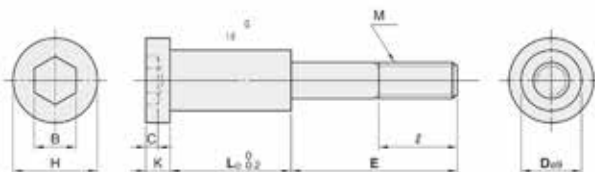
## PBTN



<b>M 材质</b>	<b>H 硬度</b>
SCM435	HRC33-38

Type	D		H		K		C		M	ℓ	B	L
PBTN	10	0 -0.15	16	0 -0.43	8	0 -0.36	4	0 -0.36	M6	17	6	40-180
	13		18	4		M8	20		8	60-280		
	16		24	7		M10	23		10	100-300		
	20	0 -0.20	27	0 -0.52	13	0 -0.43	9	0 -0.43	M12	26	14	120-400
	25		33	0 -0.62		18	10		M16	32	17	170-400

## STBG



<b>M 材质</b>	<b>H 硬度</b>
SCM435	HRC33-38

Type	D	C	K	H	B	M	ℓ	L	E
STBG	10	4	8	16	6	6	17	10	24
								15	24 29
								20	24 29 34
								10	22 27
								15	22 27 32 37
	13	4	13	18	8	8	20	20	22 27 32 37 42
								25	27 32 37 42
								30	27 32 37 42 47
								35	37 42 47
								10	30 35
	16	7	13	24	10	10	23	20	30 35 40
								25	30 35 40 45
								30	35 40 45 50
								35	35 40 45 50 55
								40	45 50 55
	20	9	13	27	14	12	26	20	38 43
								25	38 43 48
								30	38 43 48 53
								35	48 53 58
								40	48 53 58
25	10	18	33	17	16	32	15	44 49	
							20	49 54 59	
							25	49 54 59	
							30	49 54 59 64	
							40	54 59 64 69	